

产品及应用/products applications

- ◆ 端子台式滤波器
- ◆ 优秀的传导滤波器效果
- ◆ 可替代大部分进口原装滤波器
- ◆ 为变频器及干扰特别严重的场合设计

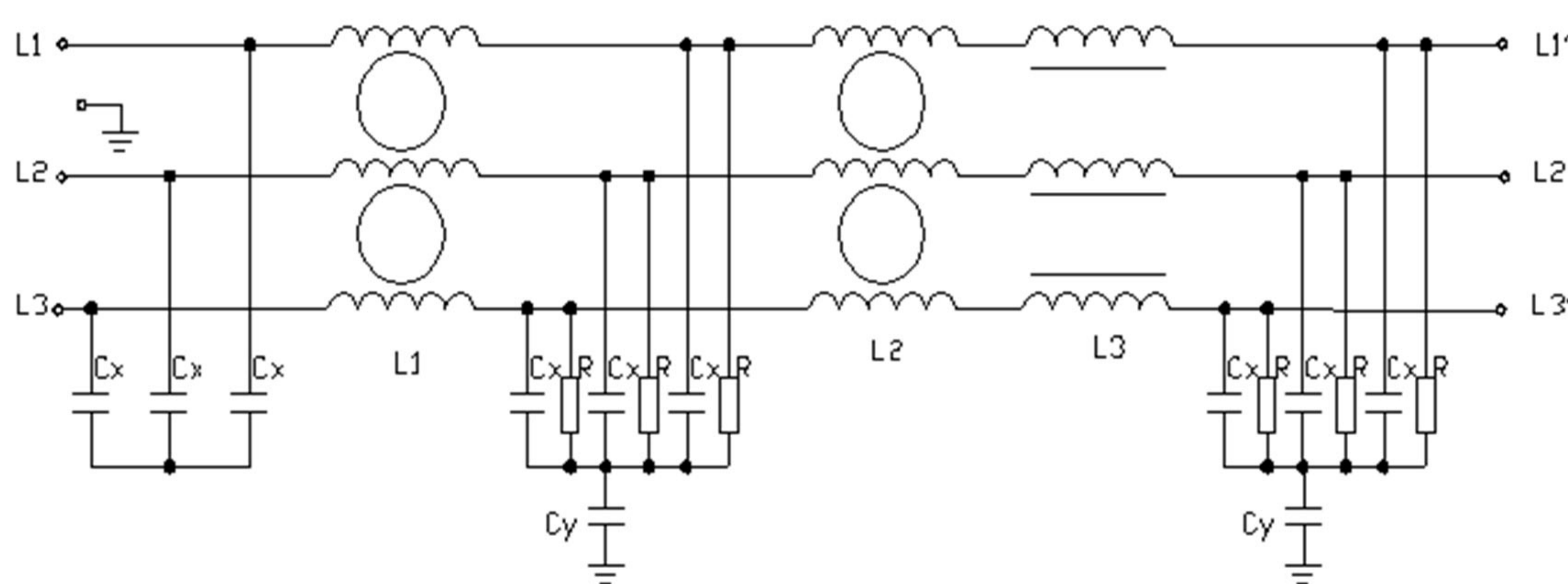


技术参数/Specification

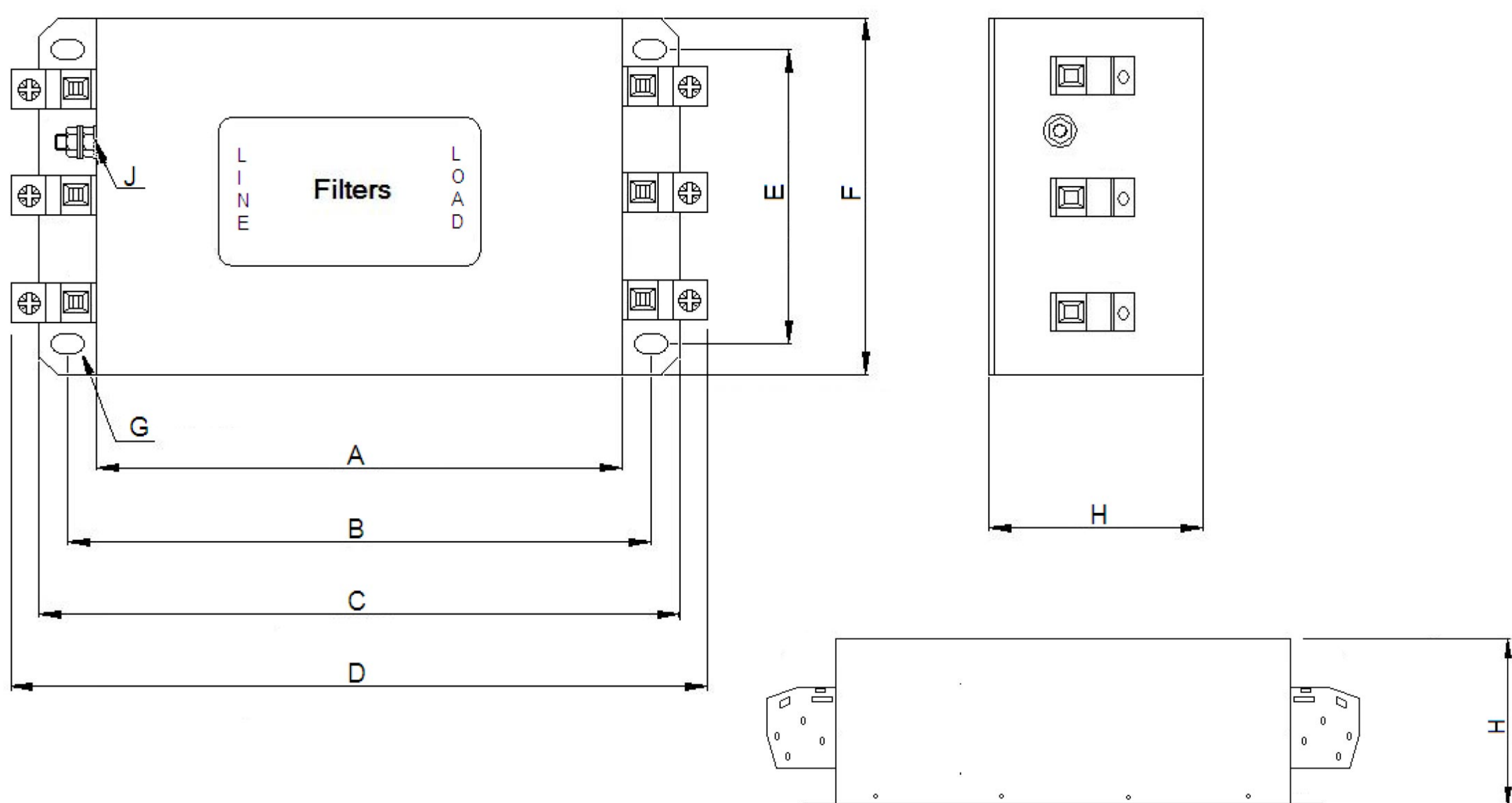
| 最高工作电压 (VAC) | 工作频率 Operating frequency Hz | 试验电压 Hipot test voltage | | 工作温度 Operating temperature | 绝缘电阻 Minimum insulation resistance |
|-----------------|-----------------------------------|----------------------------|----------|-------------------------------|---------------------------------------|
| | | P-P(VDC) | P-E(VDC) | | |
| 520 | 50/60 | 2250 | 2700 | -25~+85°C | >200M @500VDC |

| 输入滤波器 Input filter | 泄露电流 Leakage current | 额定电流 Current rating (@40°C) A | 外形尺寸 Housing | 变频器功率 Inverter power (KW) | 重量 g |
|-----------------------|-------------------------|-------------------------------------|-----------------|---------------------------------|---------|
| ME920TR-5 | <5.0mA | 5A | N2T | 0.75/1.5 | 1100 |
| ME920TR-8 | <5.0mA | 8A | N2T | 2.2/3.7 | 1100 |
| ME920TR-10 | <5.0mA | 10A | N2T | 4 | 1100 |
| ME920TR-16 | <5.0mA | 16A | N5T | 5.5/7.5 | 1500 |
| ME920TR-20 | <5.0mA | 16A | N5T | 7.5/8.0 | 1500 |
| ME920TR-30 | <7.5mA | 30A | N5T | 11/15 | 1500 |
| ME920TR-45 | <15mA | 45A | N10T | 18.5/22 | 2500 |
| ME920TR-60 | <15mA | 60A | N10T | 25/28 | 2500 |
| ME920TR-75 | <20mA | 75A | N12T | 30/37 | 7000 |
| ME920TR-100 | <25mA | 100A | N12T | 45 | 7000 |
| ME920TR-120 | <25mA | 120A | N12T | 55 | 7000 |
| ME920TR-150 | <30mA | 150A | N15T | 75 | 10000 |

电路原理图/Circuit Diagram



外型尺寸/Housing and dimensions: (mm)



| | A | B | C | D | E | F | G | H | J |
|------|-----|---------|-----|---------|---------|-----|--------|-----|----|
| N2T | 110 | 125±1.0 | 140 | 156±1.0 | 70±0.5 | 93 | 5.3*7 | 56 | M4 |
| N5T | 150 | 168±1.5 | 186 | 199±1.5 | 85±0.5 | 108 | 6.4*9 | 60 | M4 |
| N10T | 200 | 220±1.5 | 240 | 260±1.5 | 100±1.0 | 125 | 6.4*9 | 80 | M6 |
| N12T | 260 | 286±2.5 | 314 | 335±2.5 | 140±1.0 | 175 | 8.8*14 | 107 | M6 |
| N15T | 300 | 326±3.0 | 354 | 380±3.0 | 150±1.5 | 185 | 8.8*14 | 115 | M6 |

| 端子台安装方式 |  -10 |  -16 |  -25 |  -50 |
|---------|---|---|--|---|
| 单芯线 | 16mm ² | 25mm ² | 35mm ² | 50mm ² |
| 多芯线 | 10mm ² | 16mm ² | 25mm ² | 50mm ² |
| 扭力 | 1.7 N-m | 2.8 N-m | 3.8 N-m | 5.9 N-m |
| 剥线长度 | 10mm | 16mm | 19mm | 24mm |